

Aargau

Bahnhofstrasse 88
5001 Aarau
T 062 835 18 52
ag.ch

Appenzell Ausserrhoden

Kasernenstrasse 17
9102 Herisau
T 071 353 64 56
ar.ch

Appenzell Innerrhoden

Marktgasse 2
9050 Appenzell
T 071 788 95 23
ai.ch

Basel-Landschaft

Parkstrasse 3
4402 Frenkendorf
T 061 552 51 61
baselland.ch

Basel-Stadt

Klybeckstrasse 15
4002 Basel
T 061 267 58 61
sozialhilfe.bs.ch

Bern/Berne

Effingerstrasse 55
3008 Bern
T 031 385 18 11
kkf-oca.ch

Freiburg/Fribourg

Route du Petit-Moncor 1a
1752 Villars-sur-Glâne
T 026 425 41 63
ors-group.org/ors-ch-de

Genève/Genf

9, route des Acacias
1211 Genève 4
T 022 304 04 70
croix-rouge-ge.ch

Glarus

Rain 8
8755 Ennenda
T 055 646 67 83
gl.ch

Graubünden

Grabenstrasse 8
7001 Chur
T 081 257 30 07
gr.ch

Jura

1, rue du 24-Septembre
2800 Delémont
T 032 420 56 84
jura.ch

Luzern

Fruittstrasse 15
6002 Luzern
T 041 228 61 54
migration.lu.ch

Neuchâtel/Neuenburg

Rue Maillefer 11a
2002 Neuchâtel
T 032 889 43 08
ne.ch

Nidwalden

Knirigasse 6
6371 Stans
T 041 618 76 23
nw.ch

Oberwalden

Bahnhofstrasse 1
6410 Goldau
T 041 859 00 59
caritas.ch

Schaffhausen

Krebsbachstrasse 109
8200 Schaffhausen
T 052 632 71 71
hausderkulturen-sh.ch

Schwyz

Bahnhofstrasse 1
6410 Goldau
T 041 859 00 59
caritas.ch

Solothurn

Riedholzplatz 3
4509 Solothurn
T 032 627 84 36
so.ch

St. Gallen

Oberer Graben 38
9001 St.Gallen
T 058 229 65 09
sg.ch

Thurgau

Multiplex 1
Langfeldstrasse 53a
8510 Frauenfeld
T 058 345 67 34
migrationsamt.tg.ch

Ticino/Tessin

Via alla Campagna 9
6904 Lugano
T 091 973 23 78
crocerossaticino.ch

Uri

Gurtenmundstrasse 31
6460 Altdorf
T 041 874 09 81
ur.ch

Valais/Wallis

Zone industrielle 4
Le Botza
1963 Vétroz
T 027 606 18 95
vs.ch

Vaud/Waadt

Av. de Beaulieu 23
1004 Lausanne
T 021 316 97 55
vd.ch

Zug

Bahnhofstrasse 1
6410 Goldau
T 041 859 00 59
caritas.ch

Zürich

Röntgenstrasse 16/22
8090 Zürich
T 043 259 52 95
zh.ch



Return Assistance:
a change of perspective.

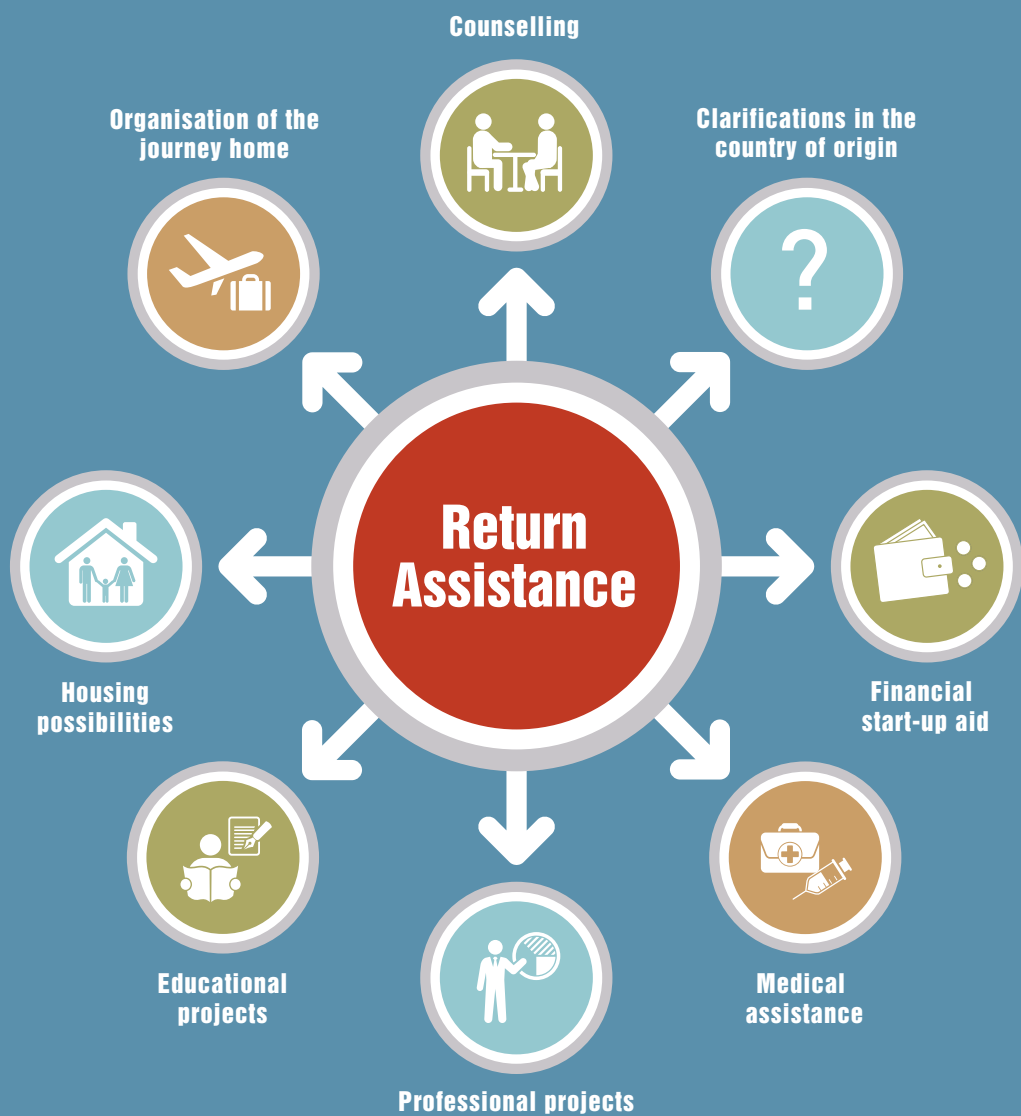
sem.admin.ch
switzerland.iom.int
youproject.ch



 **Return Assistance**



 **Return Assistance**



What is return assistance?

The return assistance supports you in returning to your country of origin. It facilitates your new start and improves the chances of a successful reintegration.

What is return counselling?

The return counselling informs you non-binding and confidentially on the return assistance and has no influence on still pending

proceedings. The return counselling supports you in the preparation and organisation of your return.

Who can receive return assistance?

The return assistance is open to all asylum seekers who want to return voluntarily to their countries of origin. Recognized refugees can also receive return assistance.

When and how?

You can apply for return assistance both during and after the completion of the asylum proceedings.

Where is the return counselling?

You can find the address and the telephone number of your return counselling centre on the next page.